



**GO**  
**Youth**  
**Challenge**



Louisiana Office Of Student Financial Assistance  
A Program of the Board of Regents



BOARD of REGENTS  
STATE OF LOUISIANA

# GO Youth ChalleNGe Program Camps

YCP does not exclude any person based upon race, color, national origin, gender or religion.

Louisiana graduates over 1400 students from its Youth Challenge Programs every year.

## Camp Beauregard



Camp Beauregard's long history of supporting the training and mobilization of United States military personnel dates back to World War I through present day conflicts, and the installation serves as the primary annual training and pre-mobilization training platform for the Louisiana National Guard. The Youth Challenge Program at Camp Beauregard is one of the initial 10 pilot programs that began in 1993. Camp Beauregard is located in Pineville, Louisiana, approximately ¼ mile east of the intersection of US Highway 165 and Louisiana Highway 116.

### Classes Start/End

January/June  
July/December

## Gillis W. Long Center



The site where the Gillis W. Long Center is located was once the home of a sugar cane plantation called Indian Camp, named for General Camp, a War of 1812 Veteran who first owned this land. The GWLC is one of seven Louisiana National Guard Installations and is responsible for providing operational and training support and resources in support of the units of the Louisiana National Guard. The Gillis W. Long Center was the second Youth Challenge Program that began operation in 1999. The GWLC is located in Carville, LA just south of Baton Rouge.

### Classes Start/End

April/September  
October/March

## Camp Minden



Camp Minden Training Site (CMTS) is the Louisiana National Guard's (LANG) newest military training site. Louisiana National Guard has a long history of training excellence. The 199th Leadership Regiment is responsible for conducting the RTI's training courses. In 2000, Camp Minden began operation making Louisiana, at the time, the only state to have 3 Youth Challenge Programs. Camp Minden Training Center is located approximately 18 miles east of Shreveport, La off of I-20. Take exit 38 to Hwy 80 then left for ½ mile.

### Classes Start/End

February/July  
August/January

## Our Mission

**The mission of the National Guard Youth ChalleNGe Program is to intervene in and reclaim the lives of 16-18 year-old youths, producing program graduates with the values, life skills, education, and self-discipline necessary to succeed as productive citizens.**

### 8 Core Components of Youth challenge

**Life Coping Skills:** Learn strategies and coping mechanisms for managing personal life through participation in classes on anger management, stress management, conflict resolution, goal setting, money management, and personal hygiene.

**Academic Excellence:** Attend daily classes with certified instructors in order to improve math and reading skills while working toward earning a high school equivalency diploma.

**Job Skills:** Explore career options through assessment, planning, and skills training while learning resume writing and interview preparation techniques.

**Responsible Citizenship:** Gain an understanding of government structure and civic responsibilities while learning the importance of cultural awareness, violence prevention, and how to be a positive community member.

**Leadership/Followership:** Learn positive leadership qualities and gain character development skills necessary to be a good follower and a valued member of society through understanding of social group roles and responsibilities.

**Health & Hygiene:** Understand the correlation between good health and hygiene habits and lifelong physical,

mental, and emotional wellbeing through participation in tobacco education, substance abuse, sexual responsibility, and nutrition courses.

**Service to the Community:** Understand the value of volunteerism and giving back to the community by completing 40 hours of service to the community and conservation projects.

**Physical Fitness:** Improve physical fitness through participation in military styled physical training, running, and organized sports designed to encourage a lifelong commitment to physical wellbeing.



**Want to learn more about us?**  
Visit our website at [www.langycp.com](http://www.langycp.com)



# Table of Contents

- 1** **GO Youth ChalleNGe Program Rules**  
The program rules, provisions, and other requirements set forth by the Louisiana Office of Student Financial Assistance.
- 2** **GO Youth ChalleNGe Billing Procedures**  
Billing procedures and requirements for the GO Youth ChalleNGe Program.
- 3** **GO Youth ChalleNGe Program Benefits**  
What the grant includes for students enrolled at any eligible Louisiana postsecondary institution.
- 4** **GO Youth ChalleNGe Summary Sheet**  
Summary requirements for the GO Youth ChalleNGe Program.

Everything you need to know about the program requirements.



## ARE YOU READY FOR THE CHALLENGE?

The Louisiana National Guard Youth Challenge Program (YCP) is an alternative educational program which offers adolescents an opportunity to change their future. Students looking for a way to succeed outside of a traditional school setting learn self discipline, leadership, and responsibility while working to obtain a high school equivalency diploma.

Led by professionals who emphasize discipline and education, this unique two part program teaches

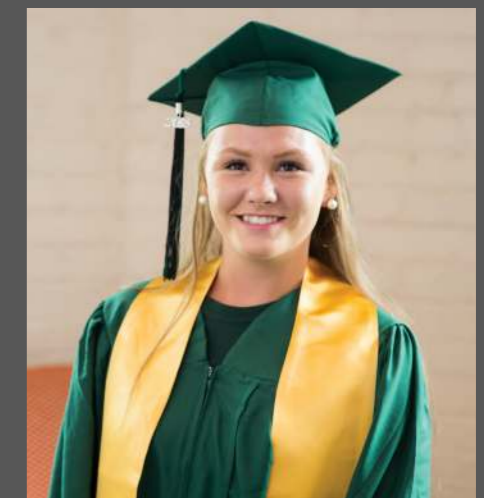
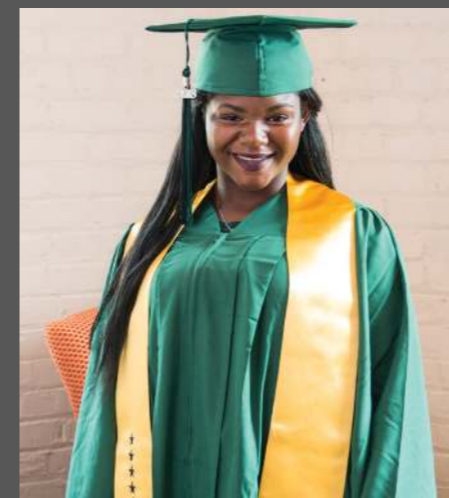
core academics and life skills, and encourages young people from all walks of life to become productive and accomplished in their chosen field.

In total, YCP is a 17 month program which consists of two phases. During the 5 month Residential Phase, students live on site at one of the three locations: Camp Minden near Shreveport, Camp Beauregard in Central Louisiana, and The Gillis W. Long Center near Baton Rouge. During this phase, students attend

school, receive individual counseling and are supervised 24 hours per day.

After graduation, students return home and enter the 12 month Post Residential Phase. During this phase, graduates are assisted by YCP case managers and community mentors to continue their education, enroll in college, begin job training, find employment, or enlist in the military.

**Go ChalleNGe Yourself!**



**1**

# GO Youth ChalleNGe Program Rules

The program rules, provisions, and other requirements set forth by the Louisiana Office of Student Financial Assistance.

## **Initial Eligibility**

- A. A student must be a U.S. citizen, or a permanent resident who is eligible to apply for citizenship.
- B. A student must be a Louisiana resident 24 consecutive months prior to enrolling in an eligible institution.
- C. A student must not have any criminal convictions:
  - a. excluding misdemeanor traffic violations.
- D. A student must graduate from the residential phase of the Louisiana National Guard's Youth Challenge Program.
- E. A student must earn a Louisiana High School Equivalency Diploma (HiSet) within 24 months after enrolling in the Louisiana National Guard's Youth Challenge Program, or complete course credit recovery through the Youth Challenge Program and return to high school. If the student meets TOPS requirements, the student can also receive a TOPS Award.

## **Application: FAFSA**

- A. Free Application for Federal Student Aid (FAFSA): [www.fafsa.gov](http://www.fafsa.gov)
- B. A student must submit a FAFSA for every year of enrollment in a postsecondary institution.

## **Award Acceptance**

- A. Must enter an eligible institution as a full-time student by the first semester (excluding summer sessions) following the one year anniversary of completing the Youth ChalleNGe Program. For example, if you complete the Post Residential phase in May 2019, you must enroll in a post secondary school by August 2020. Beginning in the 2020-2021 academic year, this time period is extended to the fifth anniversary after completing the Youth ChalleNGe Program.

- B. If the student joins the United States Armed Forces upon graduation from the Youth Challenge Program, they must enter an eligible institution as a full-time student by the semester (excluding summer sessions) immediately following the fifth anniversary of earning a Louisiana High School Equivalency Diploma (HiSet). \*Summer sessions are not counted against a cadet when it comes to their enrollment timeline. In other words, cadets can, but are not required to, enroll in college and receive funding for summer semesters.
- C. Or within one year from the date of discharge or separation from active duty, whichever is earlier.
  - a. If discharged, must have received an honorable discharge or general discharge under honorable conditions.

## **Eligible Institutions**

- A. Louisiana public postsecondary institutions that offer a certificate, diploma, or associate or baccalaureate degree required for a high-demand, high-skill, high-wage career.
- B. A regionally accredited independent college or university in Louisiana that is a LAICU member and offers a certificate, diploma, or associate or baccalaureate degree required for a high-demand, high-skill, high-wage career.
  - a. Students enrolled in a Louisiana public postsecondary institution will receive the full amount of the cost of tuition for their institution. Students enrolled in LAICU member institutions will not receive the full amount of tuition, instead students will receive the average grant amount paid for students attending public postsecondary institutions.

## **Retention Requirements: Credit Hours**

- A. Must earn 24 credit hours each academic year
  - a. Failure to earn 24 hours will result in award cancellation
  - b. Hours earned in summer or intersession may be used
  - c. Hours earned in advanced placement courses may not be used
  - d. Hours earned in remedial courses required by the institution may be used

# 1

## **GO Youth ChalleNGe Program Rules**

The program rules, provisions, and other requirements set forth by the Louisiana Office of Student Financial Assistance.

### **Retention Requirements: GPA**

- A. At the end of each Academic Year, the following cumulative GPA must be maintained:
  - a. 2.50 on a 4.00 scale
- B. Steady Academic Progress is checked at the end of each semester
  - a. 2.00 on a 4.00 scale
- C. Award is reinstated upon attainment of the required GPA
- D. Students failing to meet their GPA requirement will be placed on suspension not to exceed one year or the award will be canceled

### **Retention Requirements: Deadlines**

- A. Student must apply annually by July 1st by completing the Renewal FAFSA
- B. Student must be continuously enrolled on a full-time (12-hours) basis during the academic year
  - a. A student is considered full-time for the semester if they are carrying full-time hours as of the 15th class day of the semester. Full-time is 12 hours of enrolled coursework



# 2

## **GO Youth ChalleNGe Billing Procedures**

The program billing procedures and other requirements set forth by the Louisiana Office of Student Financial Assistance.

### **Billing Procedures**

- A. Youth Challenge Counselor enters student information into Award System
- B. Award System checks for and loads FAFSA
- C. YCP award and first term eligible award detail created for student. Student is added to Master Roster
- D. School enters students' payment requests in the Award System with Academic Standing of YC
- E. LOSFA processes payment through review and invoicing
- F. LOSFA requests check through Fiscal, then the Scholarship and Grant Department mails the check and information to the School

# 3 GO Youth ChalleNge Program Benefits

What the grant includes for students enrolled at any eligible Louisiana postsecondary institution.

## The Go Youth ChalleNge Grant includes:

The grant is a two-year award and will cover the cost of tuition for a student enrolled at any eligible Louisiana public postsecondary institution in a college program that will lead to a three, four, or five star job in the Louisiana job industry. For students enrolled at a LAICU member institution, in a college program that will lead to a three, four, or five star job in the Louisiana job industry, the grant covers the average grant amount paid for students attending a public postsecondary institution.



A list of Louisiana's star-rated jobs can be found on [www.laworks.net](http://www.laworks.net). LOSFA's online Match and Fit tool, [www.unlockmyfuture.org](http://www.unlockmyfuture.org), gives students a star rating for each career that they are matched with, once they complete an online skills and interest assessment.



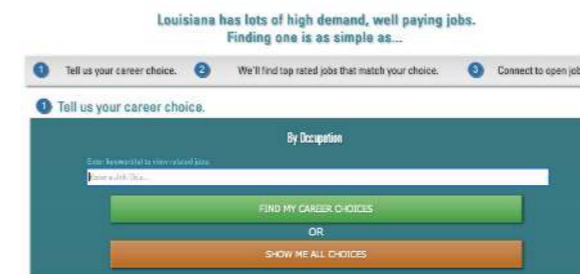
**LOSFA uses a 5-point match tool to help students find their best fit career!**

# Finding a three, four or five star job: Search LA Works step by step

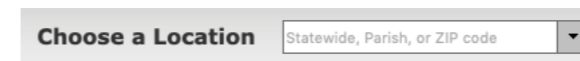
- 1 Log on to laworks.com
- 2 Click on the Louisiana Star Jobs section



- 3 Type in a job you are interested in and click "Find My Career Choices" or click on "Show Me All Choices."
- 4 Adjust the search criteria to 3 - 5 stars



- 5 Choose a location
- 6 Click on the "Show Results" button



Your results will appear starting from five to three star jobs.

Star Rating	Occupational Title	Best Match or Related	Currently Advertised Jobs	Wages		
				Entry-level	Typical	Experienced
★★★★★	Accountants and Auditors <a href="#">Find Training</a>	Best	243 <a href="#">Show Current Listings</a>	\$19.47	\$31.70	\$48.27
★★★★★	Administrative Services Managers <a href="#">Find Training</a>	Best	38 <a href="#">Show Current Listings</a>	\$19.30	\$37.90	\$61.33
★★★★★	Aircraft Mechanics and Service Technicians <a href="#">Find Training</a>	Best	38 <a href="#">Show Current Listings</a>	\$19.67	\$29.98	\$41.61
★★★★★	Architectural and Engineering Managers <a href="#">Find Training</a>	Best	30 <a href="#">Show Current Listings</a>	\$42.86	\$71.86	>\$90.00
★★★★★	Bus and Truck Mechanics and Diesel Engine Specialists <a href="#">Find Training</a>	Best	123 <a href="#">Show Current Listings</a>	\$12.91	\$21.35	\$30.94
★★★★★	Business Teachers, Postsecondary <a href="#">Find Training</a>	Best	6 <a href="#">Show Current Listings</a>	-----	-----	-----
★★★★★	Captains, Mates, and Pilots of Water Vessels <a href="#">Find Training</a>	Best	25 <a href="#">Show Current Listings</a>	\$20.75	\$43.32	\$69.42
★★★★★	Carpenters <a href="#">Find Training</a>	Best	149 <a href="#">Show Current Listings</a>	\$12.81	\$21.00	\$31.52
★★★★★	Chefs and Head Cooks <a href="#">Find Training</a>	Best	101 <a href="#">Show Current Listings</a>	\$11.15	\$21.74	\$37.98
★★★★★	Chemical Engineers <a href="#">Find Training</a>	Best	15 <a href="#">Show Current Listings</a>	\$31.87	\$51.96	\$77.42

# **4 GO Youth ChalleNGe Summary Sheet**

Summary requirements for the GO Youth ChalleNGe Program

## **1. Student Eligibility Requirements and Responsibilities:**

- Graduate from the Youth Challenge Program
- Earn a high school equivalency diploma (HiSet) or high school diploma
- Enroll as a full-time (12-hours) student
- Enroll in any eligible program at an eligible Louisiana postsecondary institution

## **2. Postsecondary School Requirements and Responsibilities:**

- Review the TOPS Student Roster for students who qualify for GO-Youth ChalleNGe Program
- School enters students' payment request in Award System with Academic Standing of YC
- Submit grades at the end of each semester

## **3. YCP Staff Responsibilities:**

- Enter students in the Award System
- Submit Event Request Form to LOSFA to request a staff member to attend events or trainings held at YCP campsites.

Example: FAFSA Completion Workshops; Match & Fit Workshops

## **4. LOSFA Staff Responsibilities:**

- Verify Louisiana residency
- Train YCP staff on grant eligibility and procedures and FAFSA completion
- Assist cadets with FAFSA completion at FAFSA events organized by YCP staff (one per site per academic year)
- Assist cadets with career interests through Match & Fit Workshops (one per site per academic year)

## **Have any questions regarding the GO Youth ChalleNGe grant?**

**Once a cadet graduates from the program, they can contact LOSFA's customer service with questions about their grant.**



[www.osfa.la.gov](http://www.osfa.la.gov)

[custserv@la.gov](mailto:custserv@la.gov)

(225) 219-1012 or 1-800-259-5626

8:00 a.m. – 4:30 p.m. Monday – Friday

**Cadets can also opt-in our texting service known as “Signal Vine” by texting LOSFA to 50065.**





***Are You  
Ready  
for the  
ChalleNGe?***

# LOUISIANA NATIONAL GUARD

