



**LOUISIANA OFFICE OF STUDENT FINANCIAL ASSISTANCE**  
**FINANCIAL LITERACY FOR YOU**  
**FALL TOUR**





## **FALL TOUR DATES**

September 22, 2021

September 23, 2021

## **PARTICIPATING POSTSECONDARY INSTITUTIONS**

Southern University Shreveport

Louisiana Tech University

Northwestern State University

Delgado Community College

Southern University and A & M College

Louisiana State University



### **PRELUDE:**

LOSFA 101 VIDEO  
FLY TOUR VIDEOS  
5-POINT MATCH VIDEO SERIES  
CONNECT2SUCCESS  
EXPLORERS' CLUB

### **WELCOME**

5-POINT MATCH OVERVIEW AND ACTIVITIES

### **MEET YOUR ADVOCATE: BREAKOUT ROOMS**

COLLEGE CONVOS  
COPING WITH COVID

### **VIRTUAL GAMES**

**MATCH POINT 1: APTITUDE, SKILLS, AND INTERESTS**

GET A HEAD START

**MATCH POINT 2: ACADEMIC**

REQUIREMENT RELAY

**MATCH POINT 3: COST OF CHOICE**

OVER AND UNDER

### **THE MASKED COLLEGE : BREAKOUT ROOMS**

**MATCH POINT 4: SOCIAL & EMOTIONAL**  
FIND YOUR FIT

## **VIRTUAL CREW**

### **HOSTS:**

Isabel Reyes; Darren Smith, Jr.; Dalana Rattler; Kayla Gros

### **CREATIVE DIRECTION:**

LOSFA's Public Information and Communications Team

### **GRAPHIC DESIGN:**

Laura Cardon

### **VIDEO AND GRAPHIC ELEMENTS:**

Andrew Granger

### **CONTENT:**

LOSFA's Public Information & Communications Team and Field Outreach Services

### **REGISTRATION AND SCHOOL PARTICIPATION:**

Darren Smith, Jr., Breanna Paul, LFOS Regional Coordinators

**UNLOCK YOUR FUTURE BY VISITING**  
**UNLOCKMYFUTURE.ORG**



## UNLOCK YOUR CAREER PATH & GET PAID *for What You Love to Do!*

The LOSFA 5-Point Match tool is all about helping Louisiana students get started on the path to success. It covers the best career choices for you, how to pay for the education you need, where you meet admission standards, and more. The tool ensures you have everything you need to prepare for awesomeness in school and beyond. You're in the driver's seat now; where you're headed is all up to you!

### THE DETAILS

#### Degree Required

Bachelor's Degree  
Master's Degree

#### Years of College

4

#### Years of Additional School

2

#### Average Salary

\$103,530

### INVESTMENT FUND MANAGER

#### Skills & Interest



Manager



Math

up how investment  
holders) pool their  
they have

D

# Important INFO for Your Future

## WHEN SHOULD I START FILLING OUT THE FAFSA?

You can start filling out the FAFSA as early as **October 1** during your senior year in high school. **Complete your FAFSA early – no later than February 1 – to maximize your opportunity to receive gift aid!**

## FOR JUNIORS AND SENIORS

How to log into the Student Hub:

- Go to LOSFA's website: [mylosfa.la.gov](http://mylosfa.la.gov) and click on "Student Hub."
- Use your assigned LOSFA ID or LAsecureID to start the account set-up process.
- Log into your account and check your TOPS status, ACT Score, notifications, etc.
- Once you are logged in, you can opt to grant your parent(s) permission to have access to your information via the "Permission" tab. This requires your parent to set up an account as well.

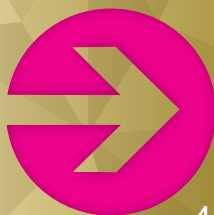
## WHAT ARE THE TOPS ELIGIBILITY REQUIREMENTS?

- Must be a U.S. citizen or permanent resident
- Meet TOPS Louisiana residency requirements
- Complete all required units on the TOPS Core or TOPS Tech/Jumpstart curriculums
- Meet minimum Core GPA requirements prior to high school graduation:
  - TOPS Tech – 2.5
  - TOPS Opportunity – 2.5
  - TOPS Performance – 3.25
  - TOPS Honors – 3.5
- Meet minimum ACT score requirements:
  - TOPS Tech – 17-19
  - TOPS Opportunity – ACT score required is equal to the prior year's state average, but is never less than 20. (*ACT state average is made available in late October.*)
  - TOPS Performance – 23
  - TOPS Honors – 27

## WHAT'S THE ACT DEADLINE?

**You must achieve a qualifying score on or before the ACT national test date in April in the academic year you graduate from high school to qualify for a TOPS Award without penalty.** June and July ACT scores can be used to qualify for or upgrade a TOPS Award with a one semester or two quarter penalty; however, it may not be a cost effective option to do so. For TOPS, LOSFA uses the highest composite score achieved and **does not use superscoring.**

*Your Future is Ready*  
**TO BE UNLOCKED**



# *Frequently Asked* **QUESTIONS**

## **1. WHAT IS THE APPLICATION FOR TOPS?**

ANSWER: FAFSA or the TOPS Online Application if you can demonstrate you are not eligible for federal financial aid.

## **2. CAN I USE TOPS OUT OF STATE?**

ANSWER: No, but you can use remaining semesters in-state if you meet renewal requirements. Contact our office for more details.

## **3. WHAT GPA DO I NEED TO KEEP TOPS?**

ANSWER: You must make Steady Academic Progress (cumulative TOPS GPA of at least 2.00) at the end of every fall term.

In addition, if you have TOPS Opportunity you must maintain a TOPS Cumulative GPA of 2.30 with 24 or more total earned hours by the end of each Summer. Once you've earned 48 credit hours the requirement increases to 2.50.

If you have TOPS Performance or Honors you must maintain a TOPS Cumulative GPA of 3.00 by the end of each Summer.

If you have TOPS Tech or if you have TOPS Opportunity and are enrolled in a technical program then you must maintain a TOPS Cumulative GPA of 2.50 by the end of each Summer.

## **4. DOES MY PARENT HAVE TO SIGN THE FAFSA?**

ANSWER: If you are a dependent student, yes. If you have an extenuating circumstance, contact our office or your university/college.

## **5. HOW DO I ACCEPT TOPS?**

ANSWER: Enroll full-time at a Louisiana college/university.

## **6. CAN I TRANSFER SCHOOLS?**

ANSWER: Yes, enroll full-time at the new school and your award will transfer with you.

## **7. WHEN DO I FIND OUT IF I HAVE TOPS OR NOT?**

ANSWER: TOPS eligibility is not determined until June AFTER you have graduated.

## **8. CAN I GET TOPS IF I ALSO HAVE OTHER SCHOLARSHIPS?**

ANSWER: You can still get TOPS and other types of financial aid as long as it doesn't exceed the Cost of Attendance (COA) at the college/university you're attending.

### **9. CAN I STILL USE MY TOPS IF I DON'T PLAN TO GO TO COLLEGE RIGHT AFTER HIGH SCHOOL?**

ANSWER: Yes, but you have to enroll as a full-time student in an eligible Louisiana college/university no later than the fall semester following the one year anniversary of your graduation from high school.

### **10. WHY IS THE GPA FROM MY SCHOOL DIFFERENT FROM THE TOPS GPA THAT LOSFA HAS FOR ME?**

ANSWER: Your TOPS GPA is only based on the units used to complete the TOPS Core Curriculum and is not the same as your overall high school GPA which is based on all course work that you completed.

### **11. CAN MY TOPS PAY OUT-OF-STATE IF MY MAJOR IS NOT OFFERED IN LOUISIANA?**

ANSWER: No, TOPS is not portable to other states, except when used at accredited out-of-state private colleges that are specifically designed to accommodate deaf and hard-of-hearing students at which the majority of the students are deaf and hard of hearing.

### **12. CAN I PUT MY TOPS ON HOLD IF I HAVE TO SIT OUT FOR A SEMESTER?**

ANSWER: If you have an extenuating circumstance, you will need to complete a Request for Exception form and submit it to our office to prevent your award from permanently cancelling for failure to maintain continuous, full-time enrollment.

### **13. CAN I REAPPLY FOR TOPS IF I DIDN'T QUALIFY WHEN I GRADUATED FROM HIGH SCHOOL?**

ANSWER: No, you must meet all requirements for TOPS upon graduation from high school.

### **14. DO I HAVE TO RENEW MY FAFSA?**

ANSWER: If you are eligible to receive federal financial aid, then you must renew your FAFSA yearly, and no later than July 1st.

### **15. ONCE I START COLLEGE, IS IT POSSIBLE THAT MY CUMULATIVE TOPS GPA IS DIFFERENT FROM THE GPA MY COLLEGE HAS FOR ME?**

ANSWER: Yes, your TOPS cumulative GPA is determined by LOSFA and is based on a 4.0 scale. It includes all courses you have taken at the postsecondary education level, including dual enrollment courses.

### **16. IF MY COLLEGE/UNIVERSITY ALLOWS ME TO REPEAT A COURSE TO EARN A HIGHER GRADE WILL TOPS REMOVE MY PREVIOUS GRADE FROM MY TOPS CUMULATIVE GPA?**

ANSWER: No. LOSFA does not have a repeat/delete or grade exclusion policy.

# SOUTHERN UNIVERSITY SHREVEPORT

## Aptitude, Skills & Interests

### THIS IS HOW YOU CAN PURSUE YOUR INTERESTS HERE:

- Spring visit days help first-time freshmen transition from high school to college.
- The most sought-after majors at Southern University Shreveport (SUSLA) are Nursing, Phlebotomy, Dental Hygiene, Airframe & Powerplant Maintenance.
- The Office of Student Success is available to help students with major and career exploration.

## Academic

### THIS IS HOW YOU CAN GET IN HERE:

- Southern University Shreveport (SUSLA) has open admissions, and you must provide the required documentation for admissions: high school transcripts, test scores, immunization records & a \$20 application fee. College transcripts are required for college transfer students.
- The average incoming freshman class size is 650-750.

## Cost of Choice

### THIS IS HOW YOU CAN AFFORD IT HERE:

- SUSLA is a 2-year public university.
- The cost of meal plans and housing for first-time freshmen at SUSLA is \$5,710.
- Scholarships, loans and work-study programs are offered to first-time freshmen to help cover costs.
- To be a full-time student at SUSLA, tuition is \$1,309.00.

## Social and Emotional

### THIS IS HOW YOU CONNECT HERE:

- The student-to-faculty ratio at SUSLA is 19 to 1.
- Classes are currently being conducted virtually.
- Some of the popular campus-wide events at SUSLA include the coronation of Miss SUSLA, football and basketball home games.
- SUSLA's mascot is a jaguar, and their colors are columbia blue and gold.
- TRIO, Upward Bound, Educational Opportunity Center, Talent Search and Veterans Up are offered on campus.
- Career Service Center, Center for Student Success and Disability Support Services are offered on campus.

## Retention

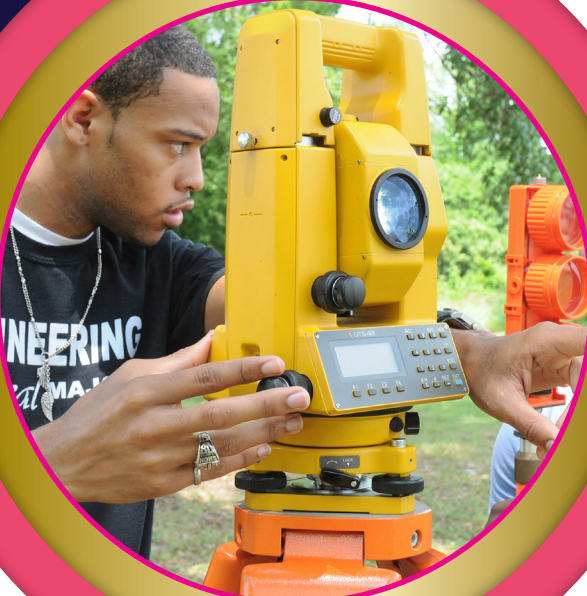
### THIS IS HOW YOUR POTENTIAL IS MET:

- University student support services are in place to assist struggling students.



## GET INVOLVED ON CAMPUS

AFRO-AMERICAN SOCIETY  
ATHLETICS  
ALPHA SIGMA EPSILON (HEALTH INFORMATION TECHNOLOGY)  
BAPTIST COLLEGIATE MINISTRY AT SUSLA  
BIOLOGY CLUB  
BUSINESS CLUB  
CHEERLEADERS  
DENTAL HYGIENIC CLUB  
EARLY CHILDHOOD EDUCATION CLUB  
ELECTRONICS TECHNOLOGY CLUB ELITE CLUB  
ENGINEERING CLUB  
FEMALE SUPPORT GROUP  
MISS SUSLA ROYAL COURT  
NATIONAL ASSOCIATION FOR THE ADVANCEMENT OF COLORED PEOPLE (NAACP)  
PHI THETA KAPPA  
RADIOLOGIC TECHNOLOGY CLUB  
STUDENT GOVERNMENT ASSOCIATION  
INTERNATIONAL CLUB  
UNIVERSITY AMBASSADORS  
+ MORE



# LOUISIANA TECH UNIVERSITY

## Aptitude, Skills & Interests

### THIS IS HOW YOU CAN PURSUE YOUR INTERESTS HERE:

- The First Year Experience helps first-time freshmen transition from high school to college.
- The most sought-after majors at Louisiana Tech are Mechanical Engineering, Biology, Computer Science, and Kinesiology.
- The Career Center, located in 337 Keeny Hall, is available to help students with major and career exploration.

## Academic

### THIS IS HOW YOU CAN GET IN HERE:

- Louisiana Tech requires either a high school core GPA of at least a 2.5 and minimum ACT of 15 or an ACT composite of 23.
- There is a 65% acceptance rate and a 79% persistence rate for first-time freshmen.
- The average incoming freshman class size is 2,000.

## Cost of Choice

### THIS IS HOW YOU CAN AFFORD IT HERE:

- The average cost of meal plans for first-time freshmen is \$1,225 per quarter. The average cost for housing for first-time freshmen is \$1,470 per quarter.
- Louisiana Tech is a public university.
- To be a full-time student at Louisiana Tech, the cost of tuition is \$10,401.
- Federal Pell Grants, Perkins loans, Stafford loans, merit-based financial aid, loans, freshman scholarships, campus jobs, and work-study are available to first-time freshmen to help cover costs.

## Social and Emotional

### THIS IS HOW YOU CONNECT HERE:

- The student-to-instructor ratio at Louisiana Tech is 23 to 25.
- Louisiana Tech is currently having a mix of virtual, hybrid, and in-person courses.
- Some of the popular campus-wide events at Louisiana Tech include sporting events, movie nights, trivia nights, and Lambright Gymnasium.
- Louisiana Tech's mascot is a bulldog, and their colors are red and royal blue.
- Bridge to Bulldogs is available as support for first time freshmen who do not meet University admissions standards.
- Student support services are offered through the Career Center, Writing Center, Clinical Residence and Recruitment Center, as well as campus tutoring.

## Retention

### THIS IS HOW YOUR POTENTIAL IS MET:

- Louisiana Tech's graduation rate is 52%.
- Tutoring, multicultural affairs, counseling, health services, disability services, and the food pantry are in place to assist struggling students.

## GET INVOLVED ON CAMPUS

ASSOCIATED PROFESSIONAL EDUCATORS OF LOUISIANA (A+PEL)  
COUNCIL OF EXCEPTIONAL CHILDREN (CEC)  
KAPPA DELTA PI  
LOUISIANA ASSOCIATION OF EDUCATORS – STUDENT PROGRAM (LAE-SP)  
NATIONAL COUNCIL OF TEACHERS OF MATHEMATICS (NCTM)  
PI LAMBDA THETA  
EXERCISE SCIENCE AND PHYSICAL EDUCATION (ESPE)  
PHI EPSILON KAPPA  
PSI CHI  
BASS CLUB  
UNION BOARD  
REGAL BLUES  
STUDENT GOVERNMENT  
+ MORE



## NATIONAL CHAMPIONSHIPS

Lady Techsters Basketball  
(3) Football Conference  
Championships

## MOST NOTABLE ALUMNI

Terry Bradshaw  
Karl Malone  
Tramon Williams  
Kim Mulkey  
Teresa Weatherspoon  
Venus Lacy

## FUN FACT

Our Lady of the Mist is the center of our campus and every Freshman Class has a medallion ceremony where they receive a medallion and toss it into the fountain. At graduation, they receive the medallion.



# NORTHWESTERN STATE UNIVERSITY

## Aptitude, Skills & Interests

### THIS IS HOW YOU CAN PURSUE YOUR INTERESTS HERE:

- ▶ The Freshman Connection Summer Orientation Program helps first-time freshmen transition from high school to college.
- ▶ The most sought-after majors at Northwestern State University (NSU) are Nursing and Radiology, Psychology, Biology, Business, and Music/Theatre.
- ▶ The NSU Counseling and Career Center is available to help students with major and career exploration.

## Academic

### THIS IS HOW YOU CAN GET IN HERE:

- ▶ NSU requires either a high school core GPA of at least a 2.35 and minimum ACT of 18 in English or 19 in Math. (COVID-19 admission standards are in place for Fall 2021.)
- ▶ There is a 94% acceptance rate and a 71% persistence rate for first-time freshmen.
- ▶ The average incoming freshman class size is 1,200 to 1,500.

## Cost of Choice

### THIS IS HOW YOU CAN AFFORD IT HERE:

- ▶ For first-time freshmen, the average cost of housing per semester is \$2,702 and the average cost of a meal plan is \$1,985.
- ▶ NSU is a public university.
- ▶ To be a full-time student at NSU, the cost of tuition is \$2,590 per semester.
- ▶ Scholarships, work-study, campus jobs, and private scholarships are available to first-time freshmen to help cover costs.

## Social and Emotional

### THIS IS HOW YOU CONNECT HERE:

- ▶ The student-to-faculty ratio at NSU is 39 to 1.
- ▶ NSU is currently holding a hybrid schedule of classes, but the university is preparing for a normal fall, face to face.
- ▶ Some of the popular campus-wide events at NSU include the Color Chaos Paint War, Demon Days Events, Inferno Run, and the Myths and Legends Tour.
- ▶ NSU's mascot is the demons, and their colors are purple and white with orange accents.
- ▶ TRIO/Student Support Services Programming is available as support for first-time freshmen.
- ▶ Tutoring, grant assistance, textbook assistance, and programming are offered to support students.

## Retention

### THIS IS HOW YOUR POTENTIAL IS MET:

- ▶ NSU's graduation rate is 68%.
- ▶ Tutoring through the Academic Success Center, advising, and disability support are in place to assist struggling students.



## GET INVOLVED ON CAMPUS

A MILLION RECORDS OF NSU  
ADDICTION STUDIES CLUB  
AFRICAN AMERICAN CAUCUS  
AMERICAN CHEMICAL SOCIETY  
AMERICAN CRIMINAL JUSTICE ASSOCIATION  
AMERICAN SOCIETY FOR MICROBIOLOGY  
ARGUS LITERARY AND ART MAGAZINE  
ASSOCIATION FOR INFORMATION TECHNOLOGY PROFESSIONALS  
BAPTIST COLLEGIATE MINISTRY (BCM)  
+MORE



## MOST POPULAR STUDENT ORGANIZATIONS

Greek Life  
Intramurals  
Honor Societies  
Freshman Connection  
Demon VIP

## FUN FACTS

NSU was the first school in the state to give out Esports Scholarships.

NSU is located in Natchitoches, the oldest city in the Louisiana Purchase.

## SPECIAL PROGRAMS

NSU offers an Advanced Manufacturing Technician Program, where students can work for \$12 an hour for 3 days, and complete class work for 2 days to finish with associates degree in two years, plus a job.



UNLOCK YOUR FUTURE BY VISITING  
**UNLOCKMYFUTURE.ORG**

# DELGADO COMMUNITY COLLEGE

## Aptitude, Skills & Interests

### THIS IS HOW YOU CAN PURSUE YOUR INTERESTS HERE:

- ▶ The Center for New Student Engagement and Transition helps first-time freshmen transition from high school to college. Delgado also has a College and Career Success Skills Course which all first-time students are encouraged to enroll in their first semester.
- ▶ The most sought-after majors at Delgado Community College are Nursing, Radiologic Technology, and Business Programs.
- ▶ The Center for New Student Engagement and Transition assists student with major and career exploration.

## Academic

### THIS IS HOW YOU CAN GET IN HERE:

- ▶ Delgado is an open admission college.
- ▶ There is a 75.9% persistence rate for full-time first-time freshmen.
- ▶ The average fall first-time class size ranges from 1,200 to 1,900, depending on the semester.

## Cost of Choice

### THIS IS HOW YOU CAN AFFORD IT HERE:

- ▶ Delgado is a public college.
- ▶ To be a full-time student at Delgado, the average cost of tuition is \$2,039.52.
- ▶ Visit [https://www.dcc.edu/future-students/how\\_to\\_pay\\_for\\_college.aspx](https://www.dcc.edu/future-students/how_to_pay_for_college.aspx) to find out more information about available financial aid to help cut costs.

## Social and Emotional

### THIS IS HOW YOU CONNECT HERE:

- ▶ The student-to-faculty ratio at Delgado is 17 to 1.
- ▶ Delgado is currently holding hybrid, online (online self-paced), in-person, and virtual classes (online at a set date and time).
- ▶ Some of the popular campus-wide events at Delgado include Crawfest, Community College Week, and Transfer and Career Fairs.
- ▶ Delgado's mascot is Izzy the Dolphin, and their colors are green and yellow.
- ▶ TRIO Student Support Services are available as support for first-time freshmen.
- ▶ Delgado offers a wide-variety of services to support their students, from free tutoring to our Care Corner, they have you covered. Visit <https://www.dcc.edu/student-services/default.aspx> today for more information.

## Retention

### THIS IS HOW YOUR POTENTIAL IS MET:

- ▶ Delgado's graduation rate is 7% and the transfer-out rate is 14%.
- ▶ Single Stop, DePaul Community Health Program, Free Academic Tutoring, Signal Mom's Success Program, and Free Writing Labs are in place to assist struggling students.



## GET INVOLVED ON CAMPUS

ACTIVE MINDS  
ACS CHEMISTRY CLUB  
ALPHA BETA GAMMA  
AMERICAN ASSOCIATION OF UNIVERSITY WOMEN @ DELGADO  
(AAUW @DELGADO)  
BIOLOGY CLUB  
CHARITY ASSOCIATION OF STUDENT NURSES (CASN)  
CHI ALPHA CHRISTIAN FELLOWSHIP (XA)  
COLLEGIATE DECA  
CRIMINAL JUSTICE CLUB  
DELGADO ASSOCIATION OF CADD (DAC)  
DELGADO EDUCATION ASSOCIATE  
+MORE

## MOST POPULAR STUDENT ORGANIZATIONS

Student Government Association  
Phi Theta Kappa  
The National Leadership Society

## FUN FACTS

Delgado Community College is recognized as one of the nation's Top 50 community colleges by the higher education research firm Intelligent.com.

Delgado's Science and Math, Hospitality management, and Business Administration programs rank in the countries top two Associate's degree programs.



# SOUTHERN UNIVERSITY AND A&M COLLEGE

## BATON ROUGE

### Aptitude, Skills & Interests

#### THIS IS HOW YOU CAN PURSUE YOUR INTERESTS HERE:

- ▶ Peer Mentoring (University College Ambassadors) helps first-time freshmen transition from high school to college.
- ▶ The most sought-after majors at Southern University and A & M College (SUBR) are Nursing (highest enrollment), Engineering, Computer Science, and Agriculture.
- ▶ University College Academic Advising is available to help students with major and career exploration.

### Academic

#### THIS IS HOW YOU CAN GET IN HERE:

- ▶ SUBR requires a high school core GPA of at least a 2.0 and an ACT (test optional) of 18 in English or 19 in Math.
- ▶ There is a 35% acceptance rate and a 65% retention rate for first-time freshmen.
- ▶ The average incoming freshman class size is 2,000.

### Cost of Choice

#### THIS IS HOW YOU CAN AFFORD IT HERE:

- ▶ For first-time freshmen, the average cost of housing and meal plans is \$1,825.
- ▶ SUBR is a public university.
- ▶ To be a full-time student at SUBR, the cost of in-state tuition is \$4,561 and the cost of out-of-state tuition is \$8,343.
- ▶ Loans, grants, scholarships, financial aid, and work-study programs are available to first-time freshmen to help cover costs.

### Social and Emotional

#### THIS IS HOW YOU CONNECT HERE:

- ▶ The student-to-faculty ratio at SUBR is 17 to 1.
- ▶ SUBR is currently holding online, in-person, and hybrid classes.
- ▶ Some of the popular campus-wide events at SUBR include Homecoming, Springfest, and the Bayou Classic.
- ▶ SUBR's mascot is the jaguar, and their colors are columbia blue and gold.
- ▶ Dual enrollment and the Summer Bridge program are available at SUBR.
- ▶ ADA, Title IX, the Office of Disability Services, and tutoring services are available to support students.

### Retention

#### THIS IS HOW YOUR POTENTIAL IS MET:

- ▶ SUBR's graduation rate is 30%.
- ▶ Tutoring, peer mentoring, and SUSLA Connect are in place to assist struggling students.



## GET INVOLVED ON CAMPUS

ANIMAL SCIENCE/PRE-VETERINARY MEDICINE CLUB  
ASSOCIATION FOR COMPUTING MACHINERY (ACM-AITP)  
ANIMAL SCIENCE/PRE-VETERINARY MEDICINE CLUB  
ASSOCIATION FOR COMPUTING MACHINERY (ACM-AITP)  
CHILD DEVELOPMENT CLUB  
CRIMINAL JUSTICE CLUB  
DESIGNERS OF TOMORROW  
HUMAN JUKEBOX MARCHING BAND  
MINORITIES IN AGRICULTURE AND NATURAL RESOURCES  
AND RELATED SCIENCES (MANNRS)  
MINORITY ASSOCIATION OF PRE-MEDICAL STUDENTS  
(MAPS)  
NATION ASSOCIATION OF BLACK ACCOUNTANTS (NABA)  
NATION ASSOCIATION OF BLACK SOCIAL WORKERS  
(NABSW)  
NATIONAL STUDENT SPEECH LANGUAGE HEARING  
ASSOCIATION (NSSLHA)  
PRE-LAW SOCIETY  
PUBLIC RELATIONS STUDENTS SOCIETY OF AMERICA  
(PRSSA)  
SOCIAL WORK ACTION CLUB  
SOCIOLOGY CLUB  
STUDENT GOVERNMENT ASSOCIATION & ROYAL COURT  
+MORE



## MOST POPULAR STUDENT ORGANIZATIONS

SGA  
Divine 9 Greek Organizations

## FUN FACTS

Southern University and A & M College is a public, historically black land-grant university in Baton Rouge, Louisiana.

It is the largest historically black college or university in Louisiana, a member-school of the Thurgood Marshall College Fund, and the flagship institution of the Southern University System.

# LOUISIANA STATE UNIVERSITY

## Aptitude, Skills & Interests

### THIS IS HOW YOU CAN PURSUE YOUR INTERESTS HERE:

- The University Center for Freshman Year, The Office of Retention and Student Success, The Genesis Mentoring Program, and The President's Millennial Scholars Program help first-time freshmen transition from high school to college.
- The most sought-after majors at Louisiana State University (LSU) are Kinesiology (highest), Engineering, Pre-Law, Pre-Vet, Pre-Med, Pre-Nursing, Psychology, Music.
- The Olinde Career Center and the Center for Academic Success are available to help students with major and career exploration.

## Academic

### THIS IS HOW YOU CAN GET IN HERE:

- LSU uses both Holistic Review and Test-Optional Review for admission decisions.
- There is a nearly 70% acceptance rate and an 86% persistence rate for first-time freshmen.
- The average incoming freshman class size is 6,700 (2020).

## Cost of Choice

### THIS IS HOW YOU CAN AFFORD IT HERE:

- For first-time freshmen, the average cost of housing per semester is \$3,800 and the average cost of a meal plan per semester is \$2,300.
- LSU is a public university.
- To be a full-time student at LSU, the cost of tuition is \$11,962 (Pre-TOPS).
- The Stamps Scholarship, merit awards, need-based awards, legacy awards, foundation awards, work-study, and campus jobs are available to first-time freshmen to help cover costs.

## Social and Emotional

### THIS IS HOW YOU CONNECT HERE:

- The student-to-faculty ratio at LSU is 20 to 1.
- LSU is currently holding hybrid, virtual, and in-person classes.
- Some of the popular campus-wide events at LSU include Welcome Week, Fall Fest, Geaux Big, Homecoming, Holiday Spectacular, LSU Athletics, Greek Life Step Shows, and Greek Week.
- LSU's mascot is Mike the Tiger, and their colors are purple and gold.
- Pre-Scholars Academy, Student Support Services (SSS), and the President's Millennial Scholars Program are available for first-time freshmen.
- LSU Cares, Student Support Services (SSS), Genesis Mentoring, and the Center for Academic Advising are available to support students.

## Retention

### THIS IS HOW YOUR POTENTIAL IS MET:

- LSU's graduation rate is 67.6%.
- LSU Cares, the Office of Retention & Student Success, the Center for Academic Success, Genesis Mentoring, and the University Center for Freshman Year are available to assist struggling students.

## GET INVOLVED ON CAMPUS

AFRICAN STUDENT ORGANIZATION  
ACTUARIAL STUDENT ASSOCIATION  
STUDENT GOVERNMENT ASSOCIATION  
AMERICAN INSTITUTE OF CHEMICAL ENGINEERS  
BLACK MALE LEADERSHIP INITIATIVE  
COLLEGIATE ENTREPRENEURS ORGANIZATION  
FASHION ASSOCIATION AT LSU  
IMPRINT COMMUNICATIONS  
BAD MOVIE CLUB  
+ MORE



## MOST POPULAR

### STUDENT ORGANIZATIONS

Black Male Leadership Initiative  
Black Women's Empowerment  
Initiative

Student Government  
National Society of Black Engineers  
Academic Programs Abroad



## FUN FACTS

LSU is a Research-1, Flagship University, and one of only 28 universities that is Land, Sea, and Space-Grant accredited.

LSU is #1 in the SEC for Return on Investment - graduates have the lowest debt and highest income among SEC grads

LSU is graduating more African-American and Latin-American students than ever before

LSU has the fastest growing diversity among all 50 flagship universities in the country



[mylosfa.la.gov](http://mylosfa.la.gov)



Louisiana Office Of Student Financial Assistance  
A Program of the Board of Regents

